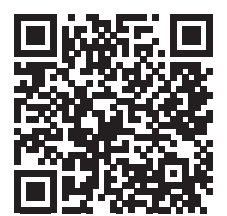




IoT-Enabled SCADA for Smarter Water Management

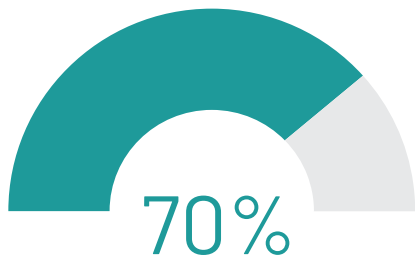
Seamless monitoring, automation, and control with Metiz AquaSPARC

Smarter Water Management
optimized for precision and efficiency

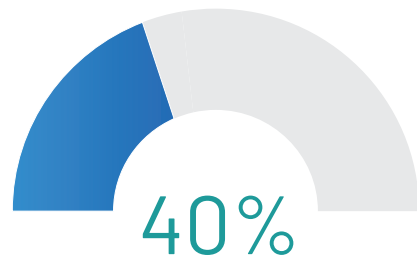




Water Utilities in India are Under Pressure. And not just from pipelines.



Leakage accounts for **70%** of the total loss in water distribution networks



Manual oversight and lack of remote visibility often leads to delayed fault detection, excessive energy use, and up to **40%** non-revenue water (NRW).

- 💧 **Blind Spots:** Limited visibility of water flow, levels, and quality.
- 💧 **Delayed Action:** Faults detected too late, causing downtime & service issues.
- 💧 **Energy Waste:** Pumps running inefficiently, driving up costs.
- 💧 **Water Loss:** Leaks, overflows, and unmonitored usage reduce the supply.
- 💧 **Manual Oversight:** High dependency on on-site staff for monitoring & control.





End-to-end Water Automation with Metiz AquaSPARC, our IoT-enabled SCADA platform



Real-time Monitoring

Continuous tracking of flow, levels, pressure, and water quality



Instant Alerts

Immediate detection of leaks, pump dry-runs, or quality deviations



Automation

Remote control of pumps, valves, and treatment processes



Optimized Energy Use

Intelligent scheduling to reduce power consumption



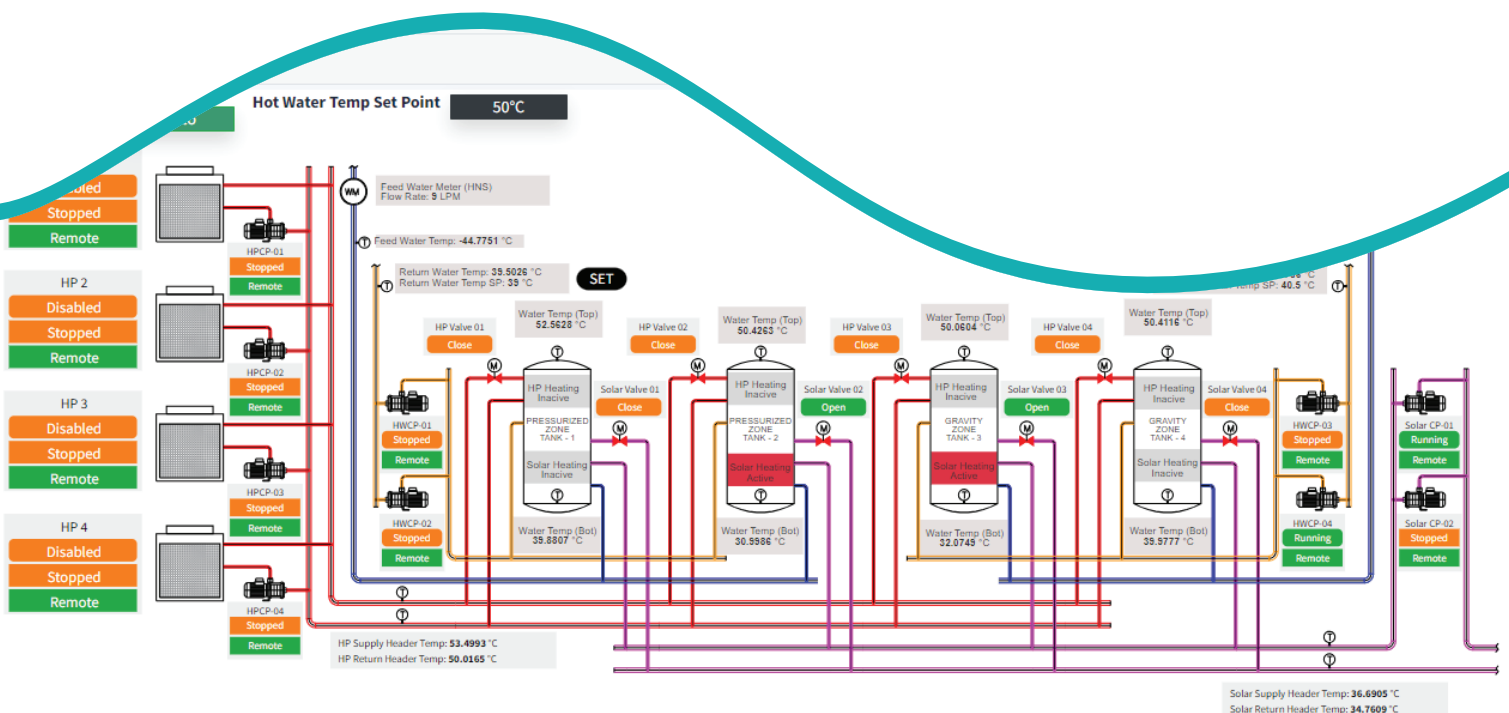
Data-driven Decisions

Historical analytics for better planning & maintenance



Unified solution

Combining hardware (sensors, control panels, gateways) and IoT-SCADA integration



Plant COP		Energy Input		Heat Output			Circulation Loss			Hot Water Flow		
8.149	Electrical Load	Electrical Energy Consumption		Total	Heat Pump	Solar	Total	Pressurized Zone	Gravity Zone	Total	Pressurized Zone	Gravity Zone
	1.3461 kW	246886.048 kW		10.9694 kW	0 kW	10.9694 kW	35.6082 kW	0 kW	35.6082 kW	9 LPM	9 LPM	0 LPM



What Metiz AquaSPARC Can Do for You

Full Lifecycle Support

- Field survey → Installation → Training → After-sales
- Firmware updates & remote diagnostics included

Insightful Reports & Compliance Logs

- Auto-generated summaries for internal review or audits
- Predictive maintenance notifications

Connected, Always

- Works with 4G, LoRa, NB-IoT, Modbus, BLE
- Offline intelligence with edge computing

Centralized Monitoring

- Live dashboards for tanks, pipelines, borewells
- Instant alerts for leakages, overflows, dry-runs

Smart Automation

- Control pumps and valves remotely or on a schedule
- Optimize pump usage to save energy

Water Quality Intelligence

- Monitor pH, turbidity, TDS, conductivity
- Receive threshold alerts for dosing and compliance

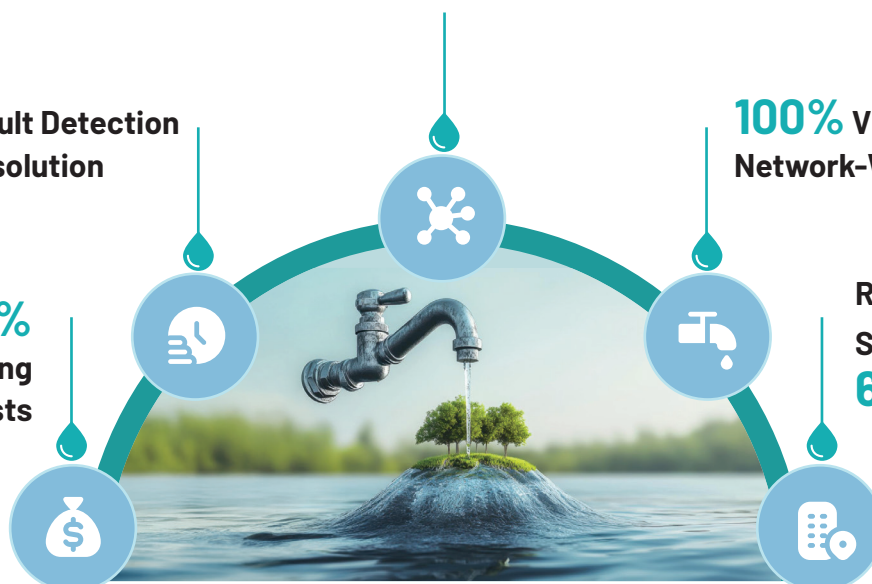
40% Reduction in Water Loss
Across Tank to Pipeline Networks

80% Faster Fault Detection
& Issue Resolution

Up to **35%**
Reduction in Pumping
Energy Costs

100% Visibility into
Network-Wide Water Quality

Reduction in Manual
Site Visits by up to
60%





Smart Monitoring of Humidity & Temperature Where It Matters Most

Key Applications



Pump Houses & Control Rooms – Prevent overheating and moisture-related damage

Water Storage Tanks – Reduce microbial growth with proactive air quality monitoring

WTP Dosing Areas – Maintain consistent conditions for chemical reactions

IoT Integration – Enable auto-triggers for fans, alarms, or dosing corrections

Compliance Logging – Ensure environmental data is audit-ready

Benefits



Extends
asset life



Improves
operational
safety



Supports
predictive
maintenance



Delivers
real-time
alerts for
timely action



About Centelon Group

Centelon is a Melbourne, VIC-based technology solutions company that has grown from two employees in 2017 to nearly 400, spread across multiple locations. We serve several large and medium enterprises as well as government departments and non-profits in their digital transformation journeys. Over the course of several years, we have built several IP assets that enable us to significantly increase impact for our customers' businesses and improve time to realisation for them.



About Centelon Robotics

Backed by the Centelon Group, our vision is to integrate hardware precision, software logic, and intelligent responsiveness, to create solutions that align with how people live, feel, and work. From humanoid robots to IoT Platforms, Centelon Robotics transforms your world with automation, insight, and adaptive design.



About Metiz

Metiz is a proprietary Zero Code Platform with lego-like composable architecture that enables businesses to define their workflows and data models and integrate with other systems in their landscape through intuitive UI. Metiz has been successfully deployed across customers in several industries, including pharma, insurance, and energy and utilities.

